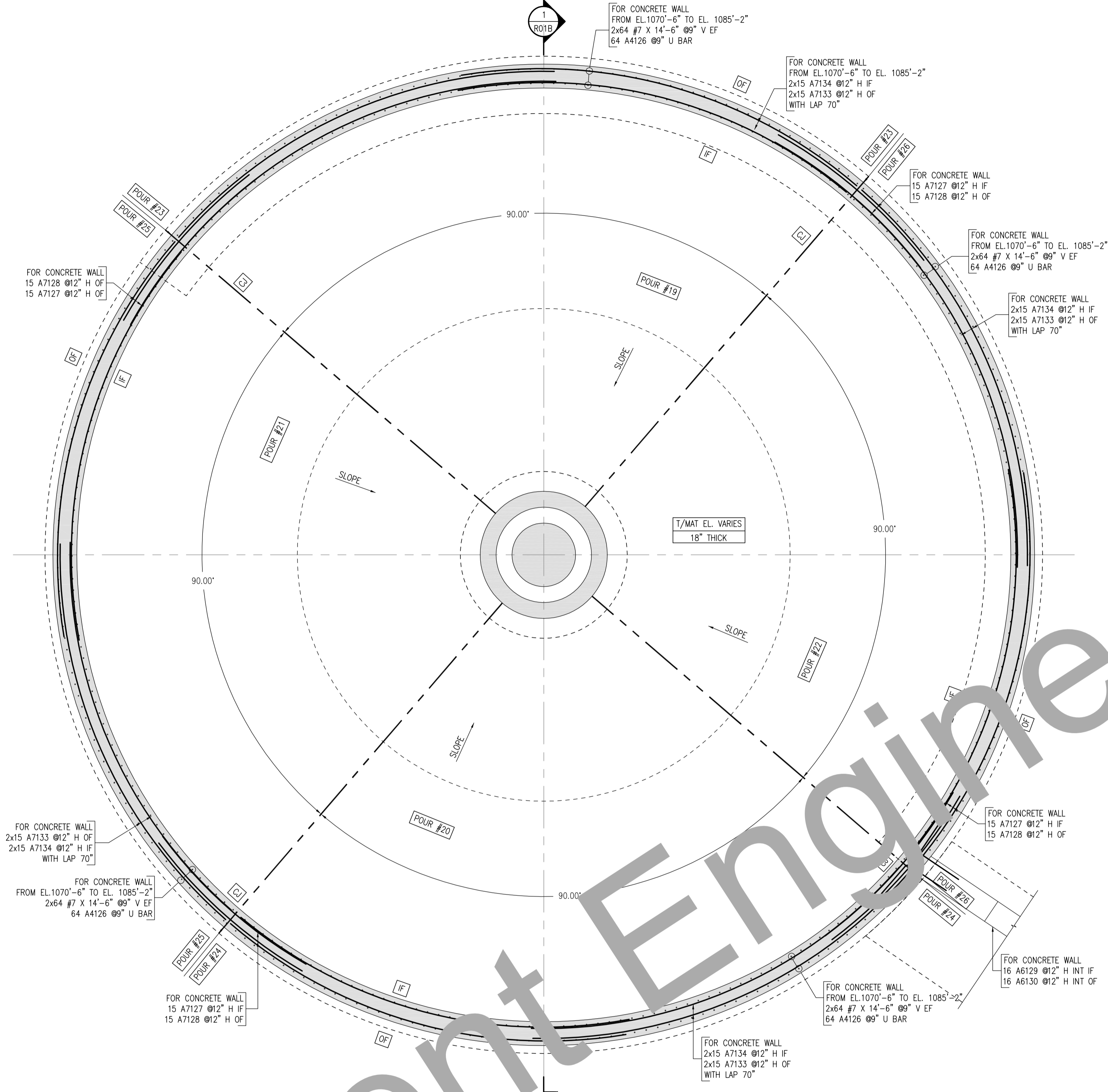
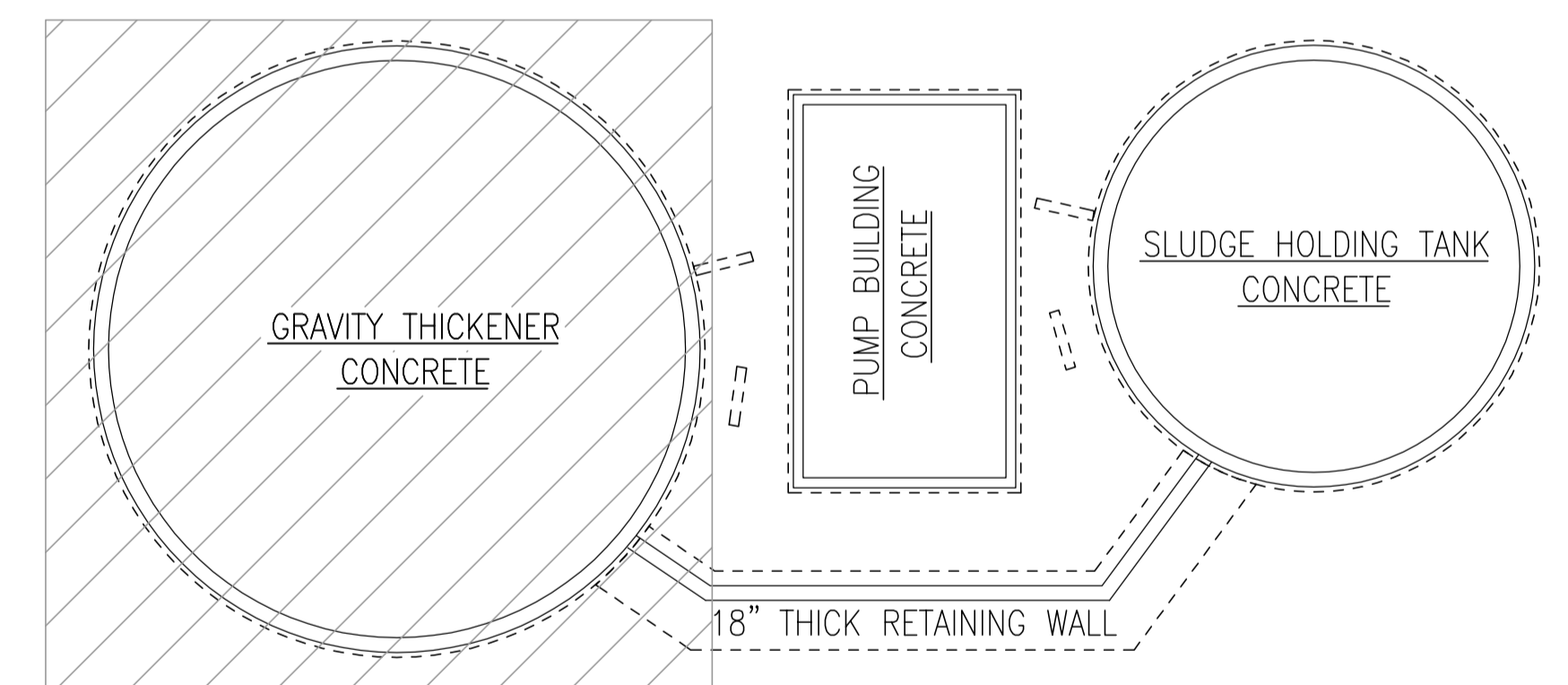
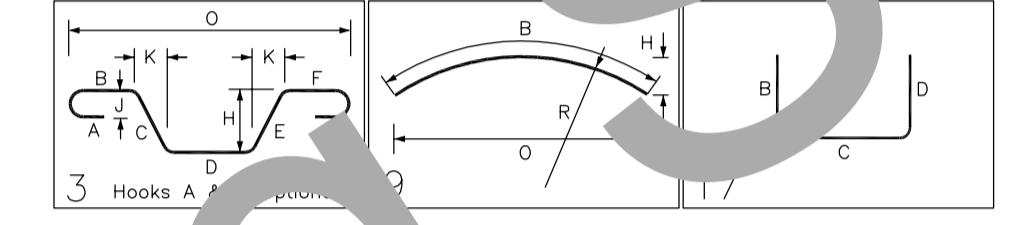


0'-6" 1'-6" 29'-4 1/2" 62'-9" 29'-4 1/2" 1'-6" 0'-6"



Release Number: R01A

Bar Mark	Qty	Size	Total Length	Type	X'	Y'	Z'	U'	V'	W'	X'	Y'	Z'	U'	V'	W'	
A4126	256	#4	5'-2"	17													
A6129	16	#6	5'-6"	17													
A6130	16	#6	5'-5 3/4"	3													
A7127	60	#7	12'-2"	9													
A7128	60	#7	12'-2"	9													
A7133	120	#7	26'-8"	9													
A7134	120	#7	26'-11"	9													



KEY PLAN

GRAVITY THICKENER - CONCRETE WALL REINFORCEMENT DETAILS
REF: S01, S10, S12, S13&S18 (07/-/17)

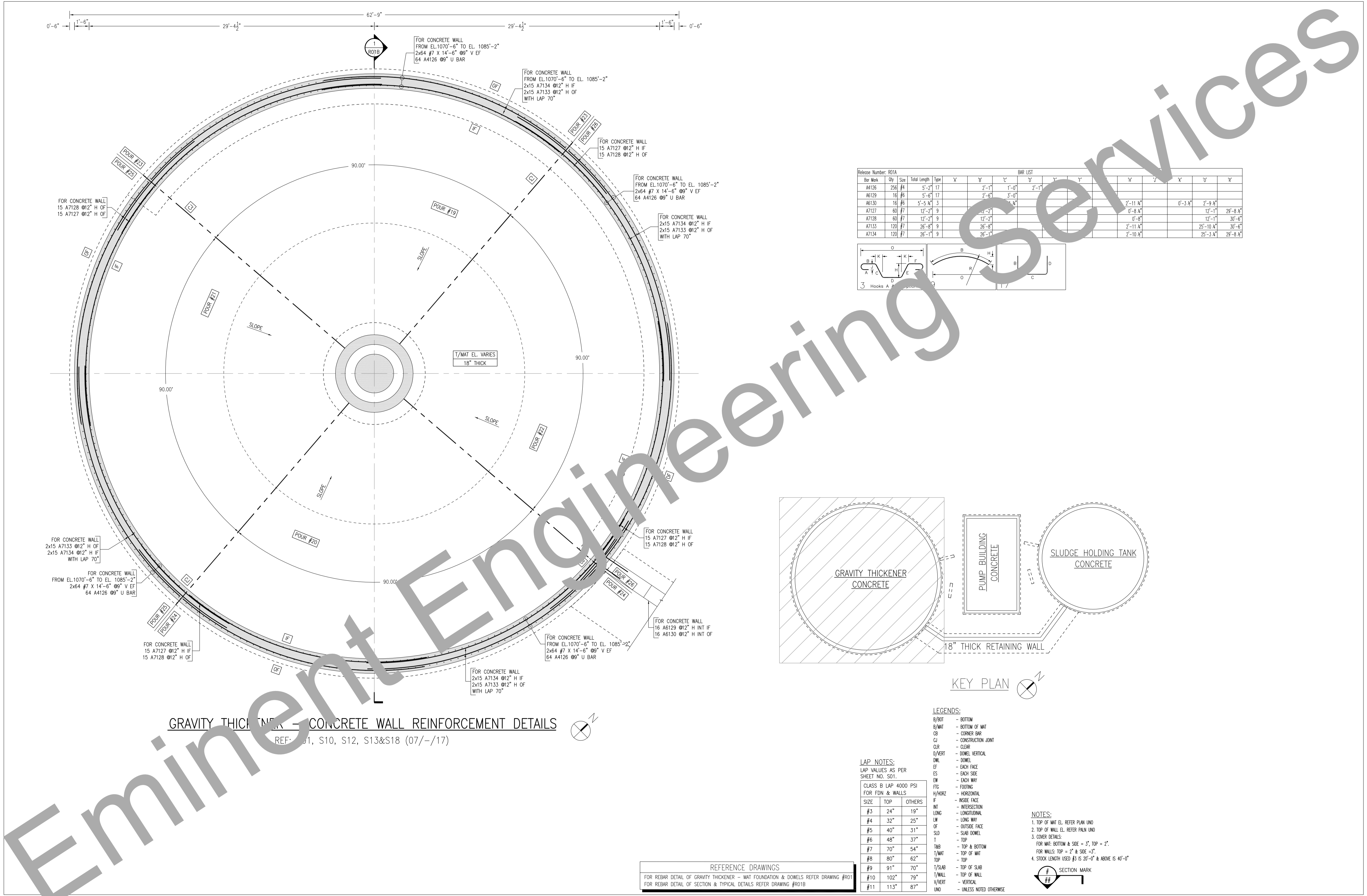
- LEGENDS:
- B/BOF - BOTTOM
 - B/MAT - BOTTOM OF MAT
 - CB - CORNER BAR
 - CJ - CONSTRUCTION JOINT
 - CLR - CLEAR
 - D/VERT - DOWEL VERTICAL
 - D/W - DOWEL
 - EF - EACH FACE
 - ES - EACH SIDE
 - EW - EACH WAY
 - FTG - FOOTING
 - H/HCRZ - HORIZONTAL
 - I - INSIDE FACE
 - INT - INTERSECTION
 - LONG - LONGITUDINAL
 - LW - LONG WAY
 - OF - OUTSIDE FACE
 - OSD - SLAB DOWEL
 - TOP - TOP
 - T - TOP & BOTTOM
 - T/MAT - TOP OF MAT
 - T/SLAB - TOP OF SLAB
 - T/WALL - TOP OF WALL
 - V/VERT - VERTICAL
 - UNO - UNLESS NOTED OTHERWISE

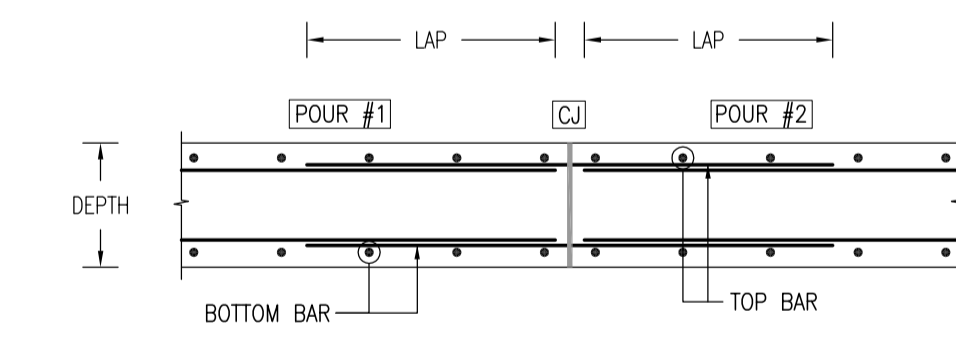
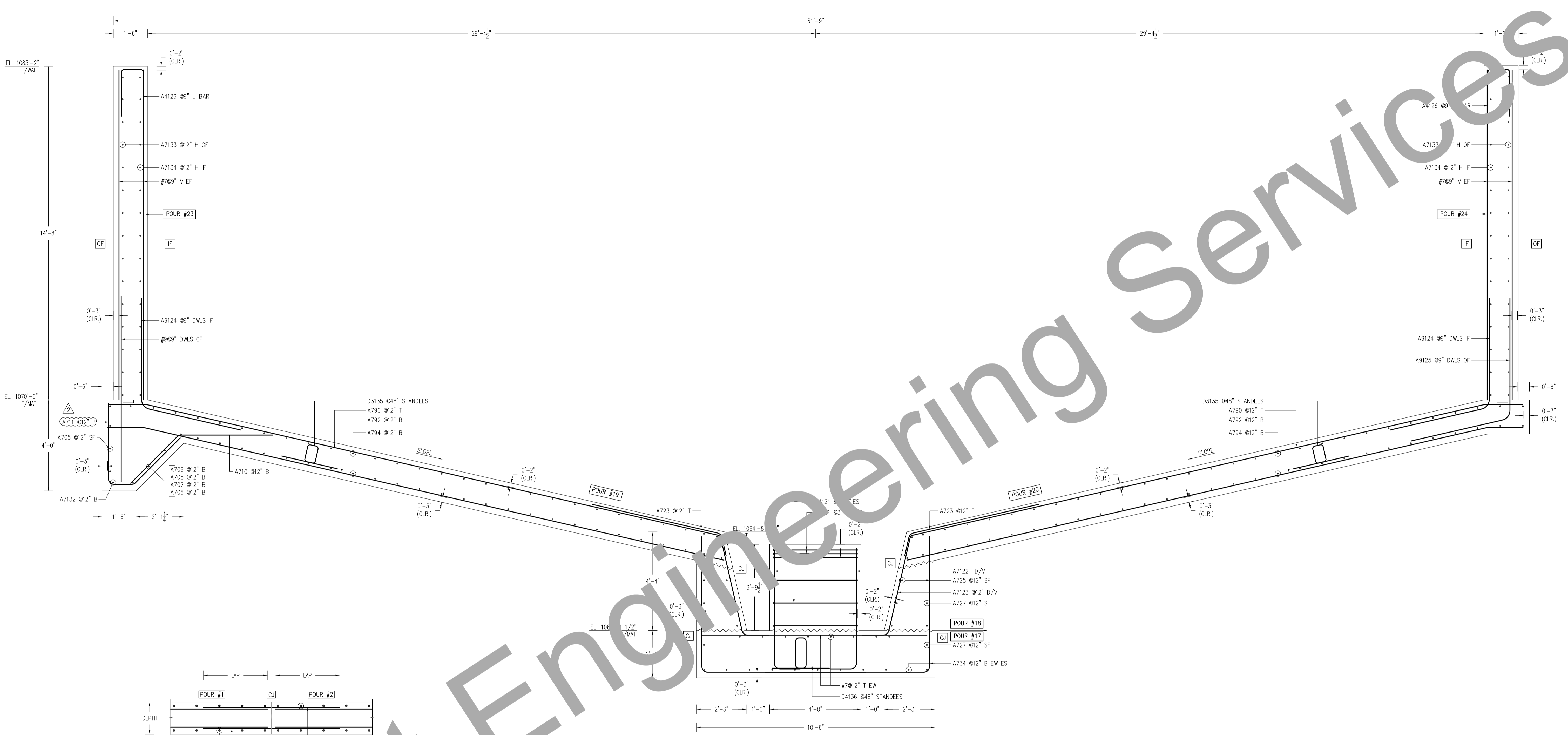
LAP NOTES:
LAP VALUES AS PER SHEET NO. S01.

CLASS B LAP 4000 PSI FOR FDN & WALLS	SIZE	TOP	OTHERS
#3	24"	19"	
#4	32"	25"	
#5	40"	31"	
#6	48"	37"	
#7	70"	54"	
#8	80"	62"	
#9	91"	70"	
#10	102"	79"	
#11	113"	87"	

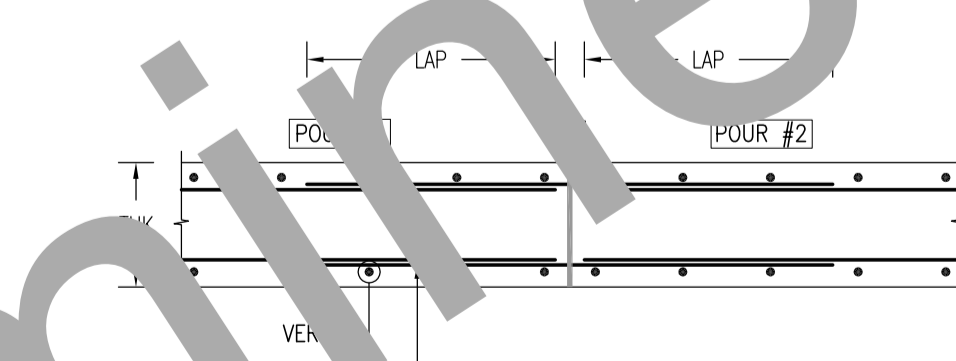
- NOTES:
1. TOP OF MAT EL. REFER PLAN UNO
 2. TOP OF WALL EL. REFER PLAN UNO
 3. COVER DETAILS:
FOR MAT: BOTTOM & SIDE = 3", TOP = 2".
FOR WALLS: TOP = 2" & SIDE = 3".
4. STOCK LENGTH USED #3 IS 20'-0" & ABOVE IS 40'-0"

REFERENCE DRAWINGS
FOR REBAR DETAIL OF GRAVITY THICKENER - MAT FOUNDATION & DOWELS REFER DRAWING #R01
FOR REBAR DETAIL OF SECTION & TYPICAL DETAILS REFER DRAWING #R01B

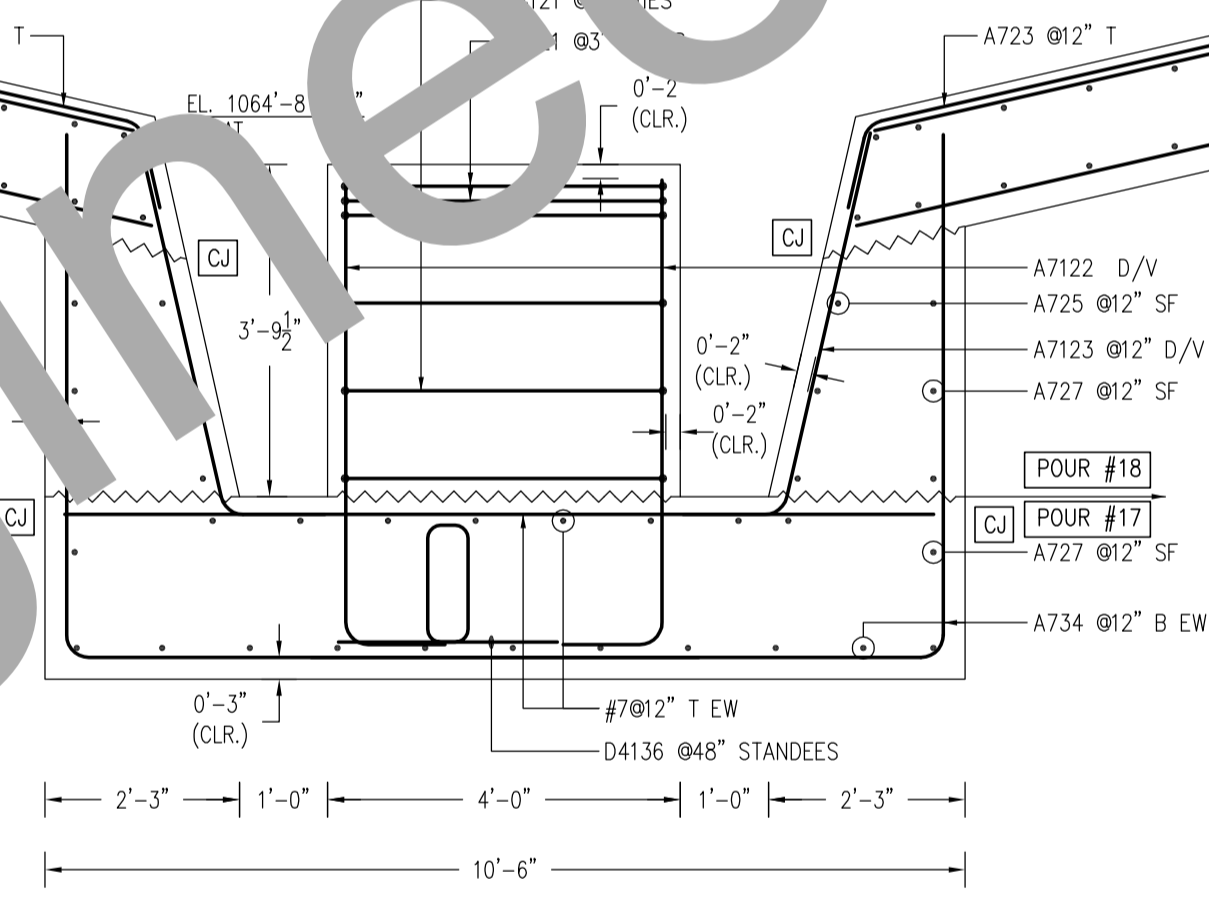




TYPICAL MAT CONSTRUCTION JOINT REINF. DETAILS
REF:(07/-/18)



TYPICAL CONCRETE WALL CONSTRUCTION JOINT REINF. DETAILS
REF:(07/-/18)



SECTION-1
REF: 1&2/ S13 (07/-/17)

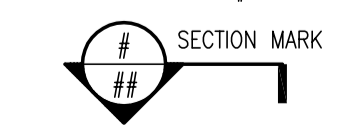
- LEGENDS:**
- B/BOT - BOTTOM
 - B/MAT - BOTTOM OF MAT
 - CB - CORNER BAR
 - CJ - CONSTRUCTION JOINT
 - CLR - CLEAR
 - D/VERT - DOWEL VERTICAL
 - DWL - DOWEL
 - EF - EACH FACE
 - ES - EACH SIDE
 - EW - EACH WAY
 - FTG - FOOTING
 - H/HORZ - HORIZONTAL
 - IF - INSIDE FACE
 - INT - INTERSECTION
 - LONG - LONGITUDINAL
 - LW - LONG WAY
 - OF - OUTSIDE FACE
 - SLD - SLAB DOWEL
 - T - TOP
 - TAB - TOP & BOTTOM
 - T/MAT - TOP OF MAT
 - TOP - TOP
 - T/SLAB - TOP OF SLAB
 - T/WALL - TOP OF WALL
 - V/VERT - VERTICAL
 - UNO - UNLESS NOTED OTHERWISE

LAP NOTES:
LAP VALUES AS PER SHEET NO. S01.

CLASS B LAP 4000 PSI FOR FDN & WALLS

SIZE	TOP	OTHERS
#3	24"	19"
#4	32"	25"
#5	40"	31"
#6	48"	37"
#7	70"	54"
#8	80"	62"
#9	91"	70"
#10	102"	79"
#11	113"	87"

- NOTES:**
1. TOP OF MAT EL. REFER PLAN UNO
 2. TOP OF WALL EL. REFER PLAN UNO
 3. COVER DETAILS:
FOR MAT: BOTTOM & SIDE = 3", TOP = 2".
FOR WALLS: TOP = 2" & SIDE = 3".
 4. STOCK LENGTH USED #3 IS 20'-0" & ABOVE IS 40'-0"



REFERENCE DRAWINGS
FOR REBAR DETAIL OF GRAVITY THICKENER - MAT FOUNDATION & DOWELS REFER DRAWING #R01
FOR REBAR DETAIL OF GRAVITY THICKENER - CONCRETE WALL REFER DRAWING #R01A